



Charitable Giving Redefined



Give@Work





Why Do Companies Give Back?

Consumers – and employees – support companies that take a stand

Make Purpose Profitable.

- ✓ **4x faster** is the speed at which high-purpose brands double their value compared to low-purpose brands.

Attract & Retain Top Talent

- ✓ **93% of Employees** believe that companies must lead with purpose.

Create a Connection with Your Customers

- ✓ **58% of consumers** buy or advocate for brands based on their beliefs and values.

The Most Profitable Global Brands Invest in Giving Back

Google

Walmart 

CHASE 


TARGET

Goldman
Sachs

2.5x

Small businesses
donate 2.5x more
compared to large
businesses

Charitable Giving: Exclusive, Expensive and Inefficient

**Companies lack access
to Charitable
Giving Tools and
Technology**

24%

of all giving
goes toward
administrative and
fundraising fees

13%

13% of Charitable
Giving is digital

\$500k+

Estimated Set up cost for
a corporate foundation

Givinga is Redefining Charitable Giving

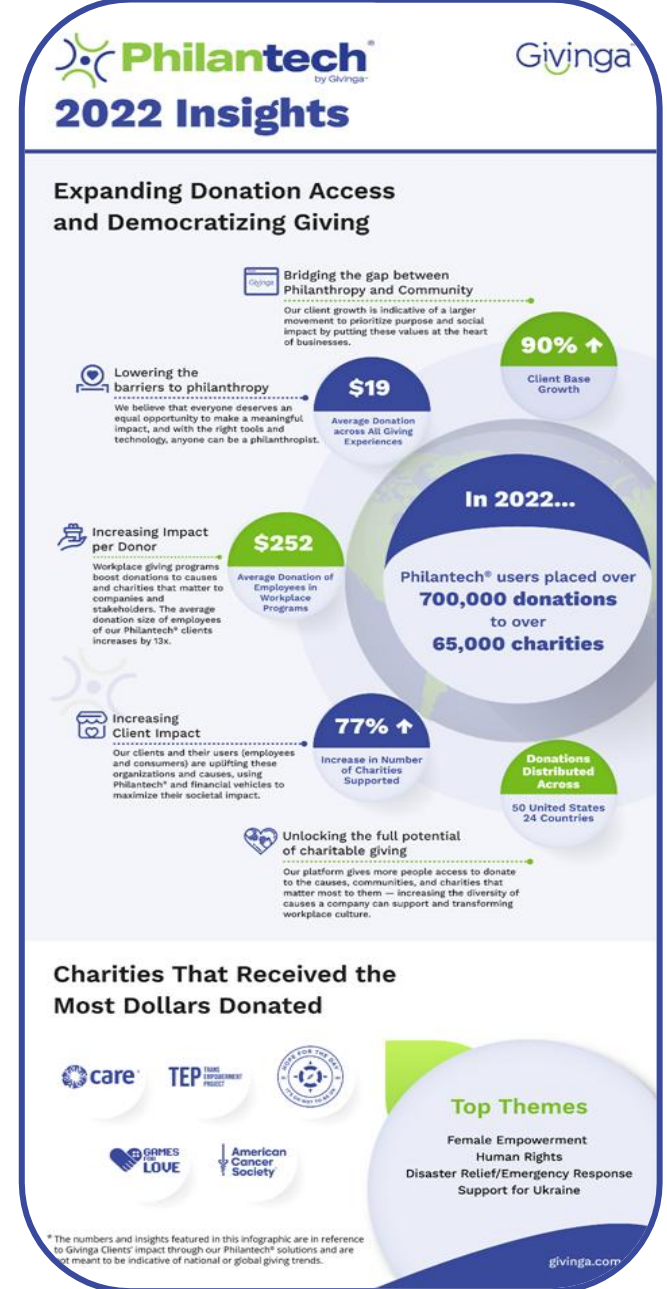
Powering experiences that transform workplace culture, build brand affinity, and cultivate everyday philanthropy.



Helping Companies Harness their Generosity

No Cost Giving Solutions

6x increase in employee engagement



Why Philantech[®]?

By removing the traditionally high cost and time barriers to philanthropy, Philantech[®] enables **brands of all sizes** to make a more meaningful impact—without compromise.



Corporate Giving Activation

Branded giving fund, using your foundation or ours, for all of the flexibility, at a fraction of the time and cost.



Administrative Ease

Easy to implement. Easy to manage. Easy to give.



Financial Technology

Fintech simplifies a traditionally inefficient process with low fees, centralized admin, transaction transparency and payment infrastructure.



What does Corporate Giving look like for you?

Custom giving solutions tailored to your companies specific needs and budget

Tailored Solution for custom needs

1. Does your company give back to the community?
2. Do you engage employees or your community in giving back (events, match program?)
3. Do you have a plan or technology platform for your charitable giving?

Philantech® Essentials

For the company who gives. Our custom, flexible, all-in-one Corporate Giving Fund looks, feels and acts like a private foundation, but without the expense, complexity and administrative burdens. Already have a foundation? Great. Philantech® will make any existing foundation more efficient.

Philantech® Easy Match

For the company who gives and matches. Our custom, match solution reimagines matching to relieve the burden on employees and program admins. Streamline the entire match process with less manual administration, increased engagement and unlock more employee match dollars for charity.

Philantech® Enterprise

For the company who gives strategically. Our advanced giving solution and toolset involves all of your stakeholders to make giving more inclusive and impactful. Expand corporate impact through portable employee accounts and add-ons for grant management, disaster relief and impact investments.

Client Giving - Case Study Examples

Essential Foundational tools and technology for Corporate Giving

Modernize your corporate giving with an intuitive digital platform. Enables companies of all sizes to instantly and easily build giving into the heart of your workplace culture.

Charitable Giving Made Easy

Instant Activation of your Corporate Giving Fund

Create Giving Campaigns in minutes

No Cost. No Commitment

Give@Work

Give @ Work Hurricane Ian Relief Match Campaign



Give@Work is supporting the local Florida community devastated by Hurricane Ian with a Corporate match. Any donation made by you will be matched to double the impact of your giving.

\$0.00 raised of \$10000.00 goal

Started Mar 27 2023 Ends in 2 days

Number of Donors
0 [See All](#)



Philantech Enterprise

Advanced giving solutions for companies who give strategically.
Enterprise level solution accessible to companies of all sizes



Thomas H. Lee Partners
EST. 1974

“The Givinga team has served as our compass as we have formalized our organization's charitable giving program and rolled out our first-ever Employee Matching Program. Their platform is easy to use and their team is an enthusiastic and incredibly knowledgeable bunch. It is safe to say the progress we have made as a Foundation is due to our partnership with Givinga.”

Rachel Coburn

Human Resources Project Manager at THL Partners

75% employee participation in employee giving and volunteering programs

Client Giving - Introducing Easy Match

Redefining the Corporate Match

Modernize Employee Match Program - eliminate admin headaches and costs .

Employee Match applied on charity websites instantly

No Cost. No Commitment Solution offered

Givinga



Fabletics's Employees Match Program

Powered by Philantech® Easy Match



Unlock Match dollars to maximize your impact. Philantech® makes giving easy, by removing obstacles that get in the way of your good intentions.

9%

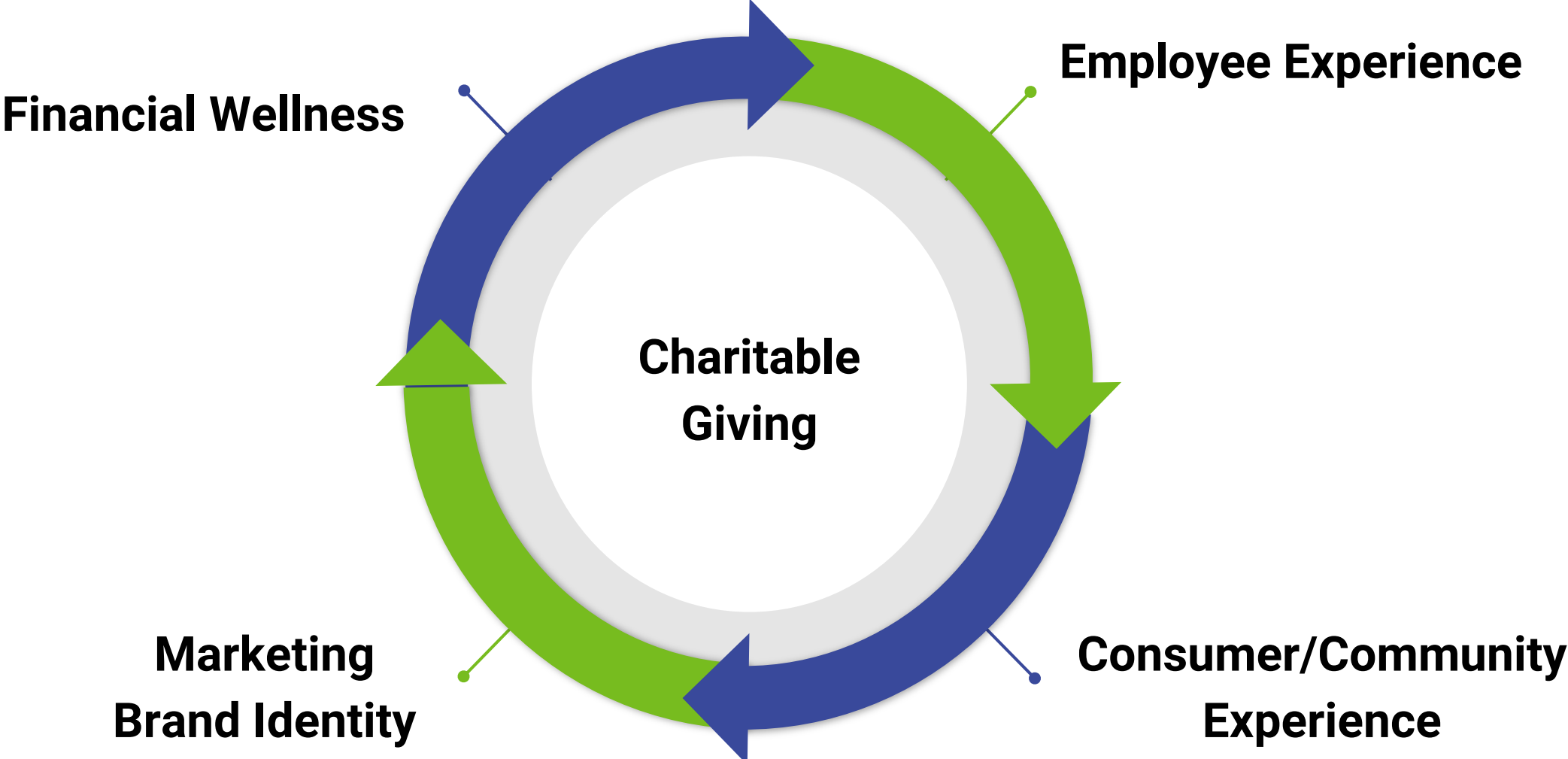
Avg. Employee
participation rate in
corporate match
programs

6x

Partners have seen
an increase in
employee match
programs via
philantech

Givinga™

Giving as a Core Strategic Driver of Company Growth





Thank you!

We believe that anyone can be a philanthropist if they have access to the right tools and technology.

Dave Gilmartin
Partnerships and Strategy
dave@givinga.com